



2022 RUNNERS' GUIDE

Welcome to the 2022 Butch Cassidy 10K and 5K. We are happy you have joined us for this year's race. Please review the important information in this runners' guide. If you have additional questions, please call 435-772-3434 or email rgubler@springdale.utah.gov. We look forward to seeing you on race day, Saturday November 12, 2022!

Packet Pick-Up

You may pick up your race number and race packet at the following locations and times:

- *Canyon Community Center, 126 Lion Boulevard, Springdale, UT 84767*
Friday, November 11th from 11:00AM to 7:00PM
- *LDS Church (10K start line), 1584 Zion Park Boulevard, Springdale, UT 84767*
Saturday, November 12 (race day) from 7:30AM to 8:30AM. The packet pick-up desk will close promptly at 8:30AM. However, if you are a 5K racer you will need to pick up your packet before you board the shuttles (see info on shuttles below). The last shuttle leaves the LDS church at 8:20AM. Please arrive and pick up your packet early.

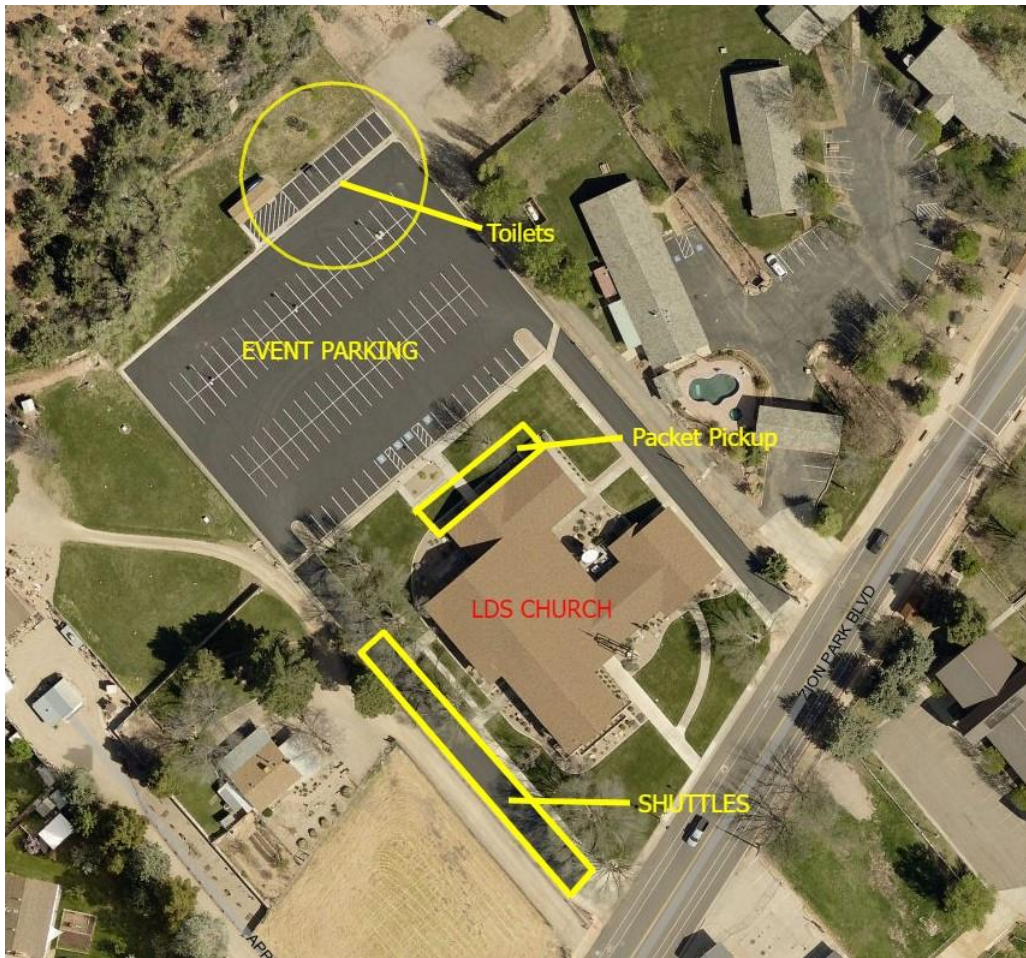
*****No switching race numbers with family or friends. You must run the race you have registered for. Your name, time, or category will not be adjusted at the finish line*****

Parking

ALL race participants (10K and 5K) and ALL spectators must park at the LDS Church parking lot at 1584 Zion Park Blvd. This is the only place you should park. There is no parking in Grafton. **DO NOT TRY TO PARK IN GRAFTON.** Do not park in the Driftwood Lodge parking lot. Park at the LDS Church and complimentary shuttles will take you everywhere you need to go on race day.

Please note that all on-street parking in Springdale is now paid on-street parking. If you plan to park on the street in Springdale please be prepared to pay the appropriate on-street parking fee at a parking pay kiosk.

See the map on the following page for more information on the location of shuttles, packet pickup, and event parking.



Shuttles

7:40AM- Shuttles at LDS Church will begin taking 5K participants to the 5K start and spectators to the finish line in Grafton.

8:20AM- Last Shuttle to leave LDS Church for 5K start and finish line. If you miss this shuttle, you will not make it to the 5K start or finish line.

9:20AM-11:30AM- There will be food, live music, entertainment, fun activities, awards and prize drawings in Grafton while you are waiting for the shuttles. Please be patient and chillax while waiting for the shuttles.

10:30AM (or after the 10K course is clear)- First shuttle will leave from the finish area back to the LDS Church in Springdale.

Note: Those who purchased a Quick Getaway Pass or the True Outlaw Experience will automatically be placed at the front of the shuttle line.

Strollers: If you bring a stroller with you and want to transport it on the shuttles, we can help you with that! Please bring the smallest stroller possible, preferably one that collapses nice and compact. Also, be aware that not all of the shuttles have room for strollers, so you may need to wait for a shuttle with stroller storage space.

Pickup: DO NOT have friends or family try to pick you up in Grafton. The road to Grafton is narrow. There are not many places for vehicles to turn around or to pass each other. Between the race finish line and the shuttle loading area there is no room for private vehicles to pick runners up after the race. Private vehicles trying to get to Grafton will slow down the shuttle transport for other runners, will put the safety of runners on the course in jeopardy, and could limit emergency vehicle access to the finish area. DO NOT have friends or family try to pick you up in Grafton. Thanks!

Start Time

5K START

9:00AM- The 5K starts just past the bridge on Bridge Road in Rockville. Heaters and hot chocolate will be available at the 5K start line to keep racers warm as you wait for the start.

10K START

9:00AM- The 10K starts in front of the Driftwood Lodge in Springdale. Hot chocolate and heaters will be available at the 10K start for racers.

Pre-Race Stretch Routine

8:40AM- There will be an organized stretch and calisthenics routine at the 10K start line for those who do not want to pull a hammy. The stretch routine will be on the grassy area at the LDS Church.

Clothing Drop

8:30AM-8:40AM- There will be a clothing drop at the start lines for both the 10K and 5K. All clothing left at the clothing drop will be transported to the finish line in Grafton.. ***If you want warm clothes at the finish line make sure they get in the drop boxes before the times specified above.*** Please do not leave expensive or sentimentally valuable clothing at the clothing drop. We cannot guarantee clothing dropped along the course will be picked up. If you do not retrieve your clothing in Grafton it will be available at the Town Office for approximately one week after the race. After that we will donate it to charity (or keep it for ourselves if it is really nice).

Course

10K- Starts in front of the Driftwood Lodge in Springdale. The course heads south then west on State Route 9 to Rockville. The course turns left (south) onto Bridge Road in Rockville. From here the course follows back roads to the historic Grafton ghost town.

5K- Starts at the 3.1 mile point of the 10K course, just past the bridge on Bridge Road in Rockville. The 5K follows the second half of the 10K course and ends in Grafton.

Both courses are generally downhill, but there are a few steep uphill sections to keep you honest. The majority of the course is on paved roads with the last half mile on gravel road. Both courses will be closed to traffic during the race.

AT 10:30 AM THE RACE ROUTE WILL BE OPENED TO TRAFFIC. PLEASE PLAN ON FINISHING PRIOR. RUNNERS ON ROUTE AFTER 10:30 MAY CONTINUE AT THEIR OWN RISK. IF WALKING, PLEASE SIGN UP FOR THE 5K RATHER THAN THE 10K.

Water / Aid Stations

Water and Gatorade will be provided at the 10K start line, at mile 3.1 of the 10K (the 5K start line), at mile 4.5 of the 10K (mile 1.5 for the 5K), and at the finish line. Limited first aid will be available at all aid stations and at the finish line.

In an effort to reduce waste, we encourage runners to bring their own bottles/cups for use at the aid stations. Of course, we will still have disposable paper cups available for runners.

Porta-potties will be available at both starting lines and in Grafton.

Special Runner Competitions

If you thought the Butch Cassidy Race was just about running fast you were wrong, dead wrong. We want you to run fast, but we also want you to have some fun while doing it. Participate in the following supplemental voluntary race competitions to enhance your race experience.

- **Butch Cassidy Look-A-Like Contest:** Run the race dressed as Butch Cassidy and you will receive a special prize at the awards ceremony. The best Butch Cassidy (as judged by our panel of expert historians and wardrobe specialists) will receive an extra-special prize. Judging and prizes will be part of the awards ceremony which starts around 10:15AM.
- **Poker Run:** Each runner will receive two poker cards in their race packet. Runners wishing to participate in the poker run will be dealt two additional cards along the course, one at mile marker 4 (mile 1 for the 5k) and one at mile marker 5 (mile 2 for the 5k). Watch for the card dealers at the mile markers and grab a card as you pass by. Take your cards to the awards tent at the finish area where you will be dealt a fifth and final card. The runner with the best poker hand at the end of the race will win a prize. (Note: Five aces is NOT a poker hand.) We will announce the winner as part of the awards ceremony which starts around 10:15AM. Nobody likes cheaters. Trading cards with other runners is cheating. Don't be a cheater. Poker cheats will be dealt with in customary Butch Cassidy style.
- **Catch Butch Cassidy:** Butch Cassidy will be running the race. The first five runners in both the 5k and 10k to catch Butch and beat him to the finish will receive a fantastic prize package from the *Zion Canyon Brew Pub*. Come prepared to run fast and win great prizes.
- **Butch Selfie Contest:** Take your best selfie either at the starting line, during the race (safely!), or at the finish line. Selfies can be emailed to Robyn at rsanders@springdale.utah.gov and will be included in our Butch Cassidy photo album on Facebook. The selfie with the most likes will win a prize!

Spectators

Butch Cassidy loves spectators! We encourage your friends and family to come watch you finish in Grafton. Here are some things they should know.

There is no parking for spectators in Grafton. Please tell your friends and family not to park in Grafton. Spectators should park in Springdale at the LDS Church in Springdale and ride the shuttle to Grafton. The last shuttle for Grafton will leave at 8:20AM.

Spectators will ride the free shuttles back to the LDS Church in Springdale after the race. The first shuttle back to the church will not leave Grafton until the 10K course is clear (usually about 10:30AM).

Grafton Activities and Entertainment

The Butch Cassidy Race is as much about the party in Grafton as it is about the race itself. Relax and enjoy the many activities going on in the historic Grafton ghost town after the race. Here is a summary of the fun activities at the post race party:

- Great post-race recovery food (free of charge for all runners)
- Hot breakfast provided by the Hurricane High School Cross Country team (cash only)
- Live music provided by Mason Cottam
- Butch Cassidy look-a-like contest
- Awards!
- Raffle for amazing prizes donated by our sponsors—free meals, hotel rooms, gift bags and much, much more!

E-bike rentals

For those who would rather enjoy a nice bike ride back to Springdale than take the shuttle, limited e-bike rentals will be available. The rental fee is \$20.00 and must be in cash (no card, Venmo, etc.) Riders can leave from Grafton and return E-bikes to Outta Here eBikes at 1458 Zion Park Blvd. Outta Here eBikes is a short, 3-minute walk from the church.

Results and Awards

Trophies will be given to the overall male and female winners in both the 10K and 5K. Age division medals will be given to the top three finishers in each age group in the 10K and 5K. All participants 10 and under in the 5K receive a finishers medal. The awards ceremony will be part of the post-race party and will start around 10:15AM.

The race will be timed by RunnerCard. Online results will be available after the race at www.runnercard.com.

Opportunity Drawing

We have loads of fine raffle prizes donated by our generous sponsors. We will randomly draw runner numbers for prizes while the race is going on. Check the raffle board at the awards table after the race to see if your number was chosen and you won a raffle prize (look for your race number on the board). You must be present to claim your raffle prize. If you don't pick your prize up after the race, we will give it to someone else.

Lodging and Dining in Springdale

Springdale is home to many fine hotels, inns, and B&B's that can provide accommodations for racers on race weekend. We encourage you to stay for the weekend and enjoy the beautiful fall weather in Zion Canyon. Springdale also boasts a variety of fine restaurants for a healthy pre-race meal on Friday night or a hearty post-race lunch on Saturday afternoon. Check out the Zion Canyon Visitors Bureau website for more information on lodging and dining – www.zionpark.com.

Sponsors

We are lucky to have the greatest sponsors in the world! If you enjoy the race, please take time to visit one (or more) of our sponsors and thank them for contributing to the race.

*****2022 TITLE SPONSOR: SUNRISE ENGINEERING*****



Platinum Level Sponsors

| | | |
|----------------------------------|-----------------------|------------------------------|
| Town of Springdale | Town of Rockville | Grafton Heritage Partnership |
| Snow Jensen & Reece, P.C. | Squirrel's Nut Butter | St. George Running Center |
| Bumbleberry Inn | Cable Mountain Lodge | Greater Zion |
| Naylor Wentworth Lund Architects | Oscar's Café | Porter's |
| Best Western Inn | Outta Here eBikes | MegaPro |

Gold Level Sponsors

| | | |
|---------------------------|------------------------|-----------------------|
| Charlie Bird | Chums | Davis Farmer's Market |
| Holiday Inn Express | Muddy Bees Bakery | PEHP |
| Prismatic Branding | River Rock Roasting Co | Sol Foods |
| Springhill Suites | Thrive Indoor Plants | Two Cranes Inn |
| Worthington Gallery | Zion Outfitters | Zion Park Motel |
| Zion Brew Pub | Zion Adventure Co | Red Desert Adventure |
| Southwest Adventure Tours | Zion Cycles | Utah Clean Cities |

Silver Level Sponsors

| | | |
|----------------|----------------------|----------------------------|
| Classic Sports | Buck's Ace Hardware | Sky Mountain Golf Course |
| Lin's | Red Canyon Co | Stage Coach Grille |
| Zion Arborist | Z-Arts | Zion Canyon Medical Clinic |
| | Zion Forever Project | |